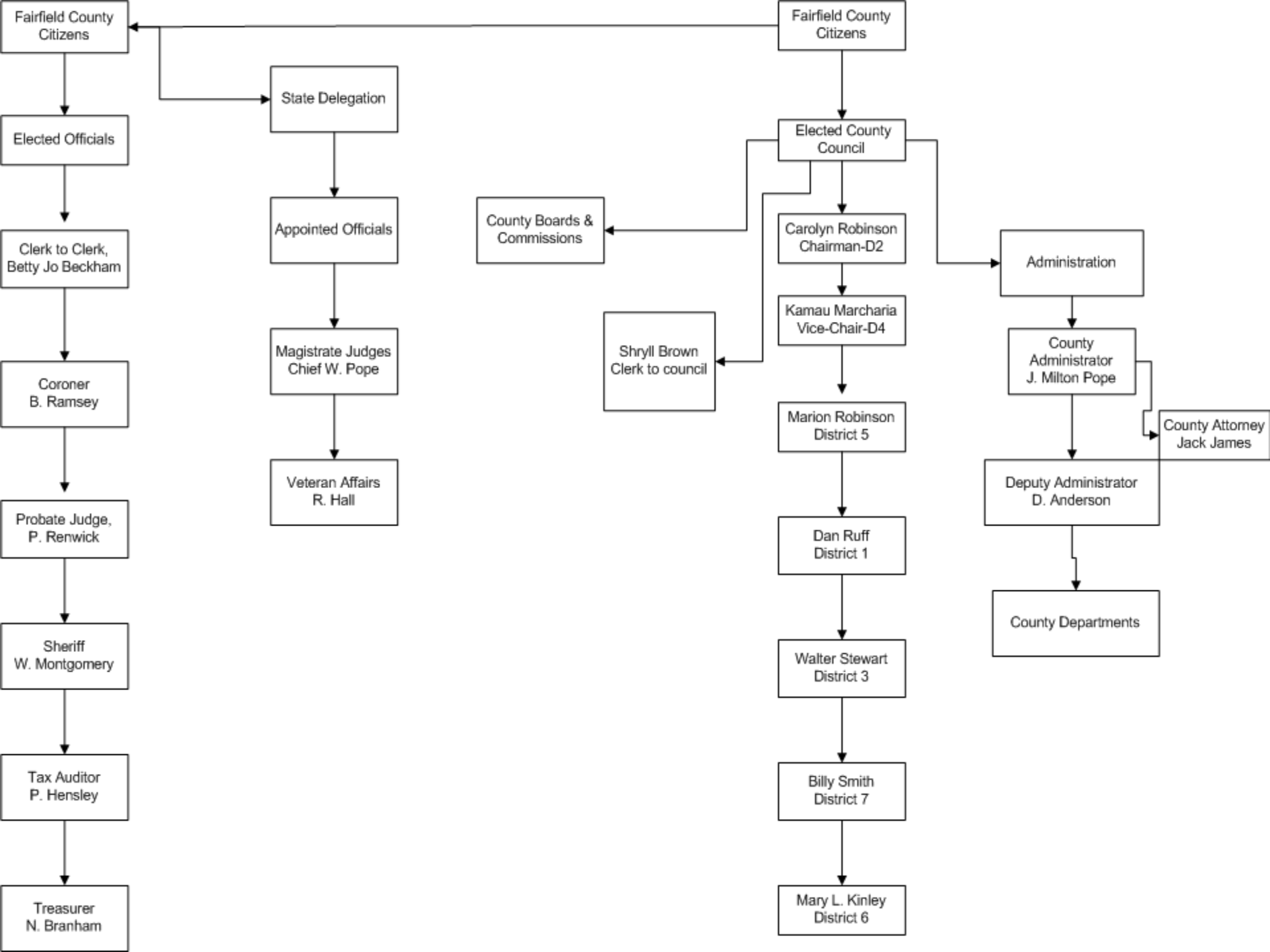




FAIRFIELD COUNTY
ORGANIZATIONAL STRUCTURE
And Departmental Layout



Fairfield County Council

County Administrator
J. Milton Pope

Deputy County Administrator
Davis anderson

Attorney
Jack James

Finance
Laura Johnson

Human Resources
Hyatte Kelsey

Purchasing
Sheila Pickett

IT
Marvin Allen

Tax Assessor
Randy Roberts

Tax Collector
Miriam Woodard

Building Maintenance
Keith Branham

Planning & Zoning
Tim Roseborough

Vehicle Maintenance
Ricky Mozie

Economic Development
Tiffany Harrison

Detention Center
Teresa lawson

Pubic works
Billy Lucas

Recycling
Jake Gaston

Animal Service
David Brown

E-911
Phyllis Watkins

Museum
Pelham Lyles

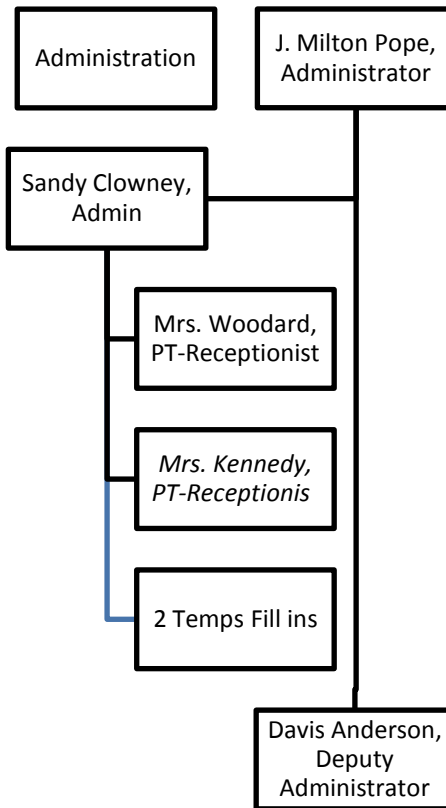
Recreation
Lori Schaffer

WIA
Tonya Jones

EMS
Mike Tanner

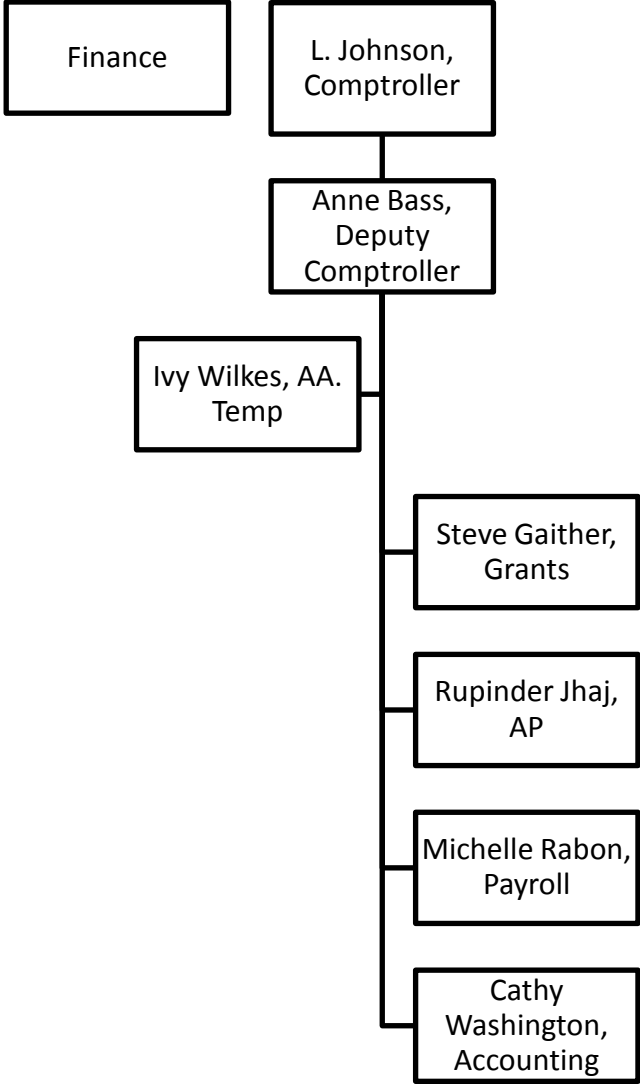
Fire Services
Tony Hill

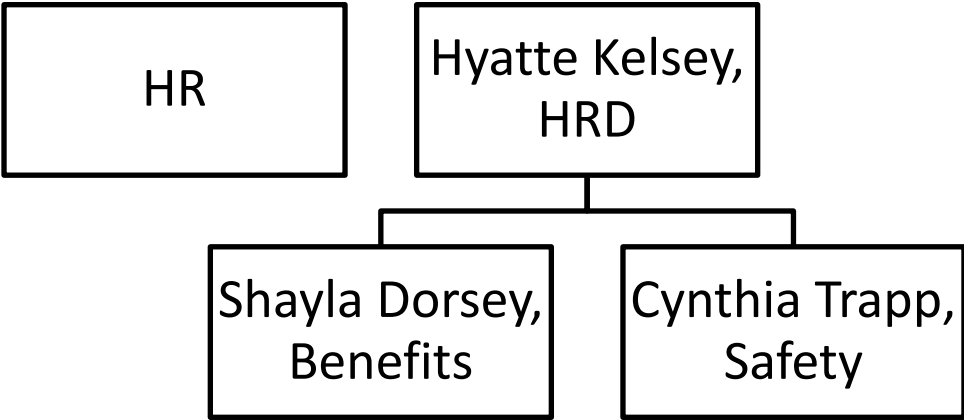
Fairfield County Liaison
Jackie workman



County
Attorney

Jack James

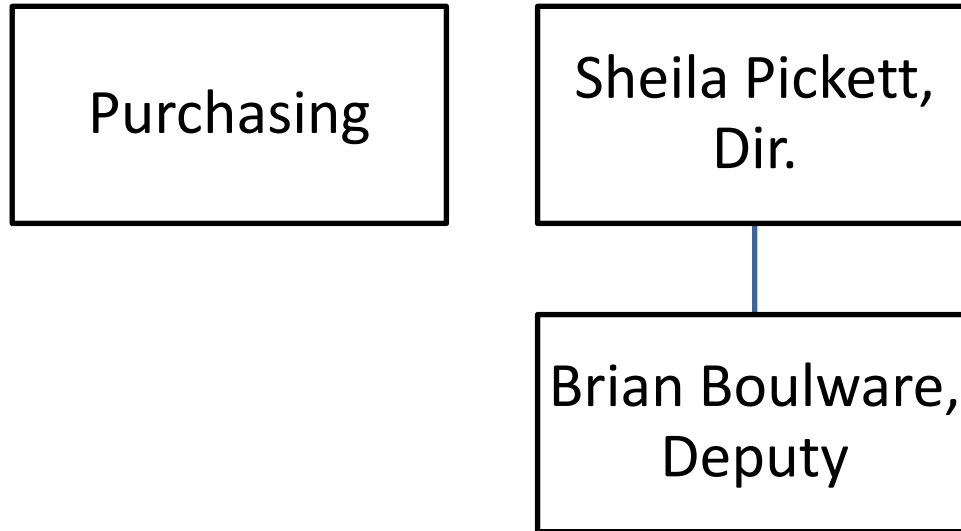


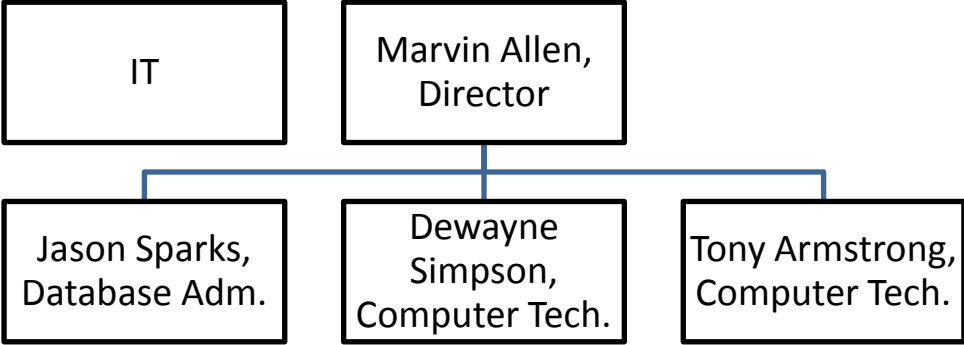


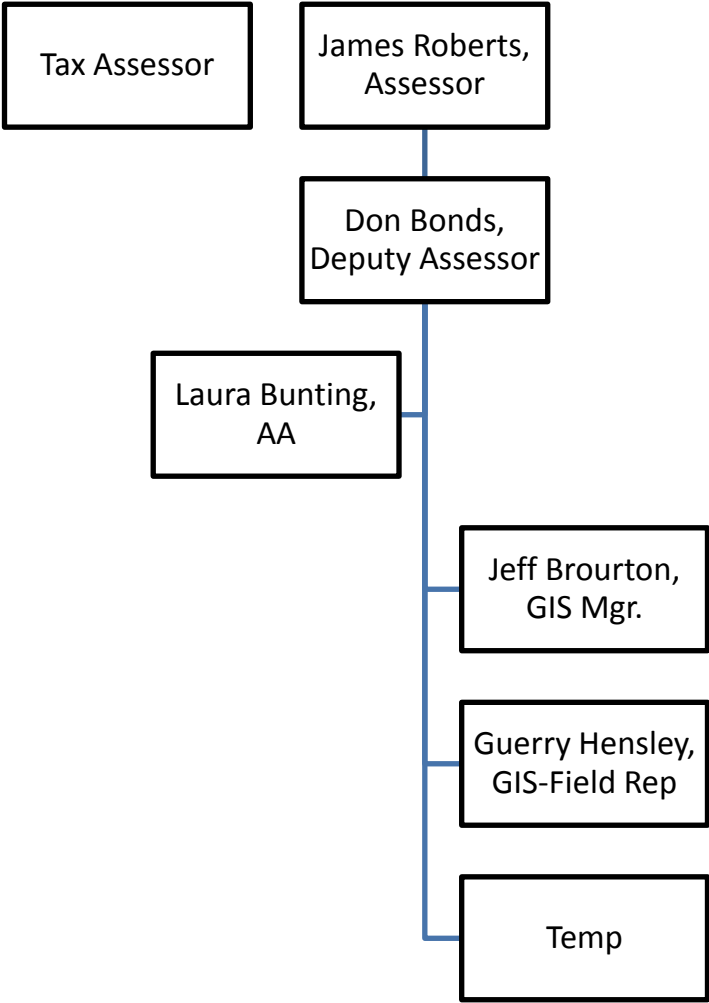
Purchasing

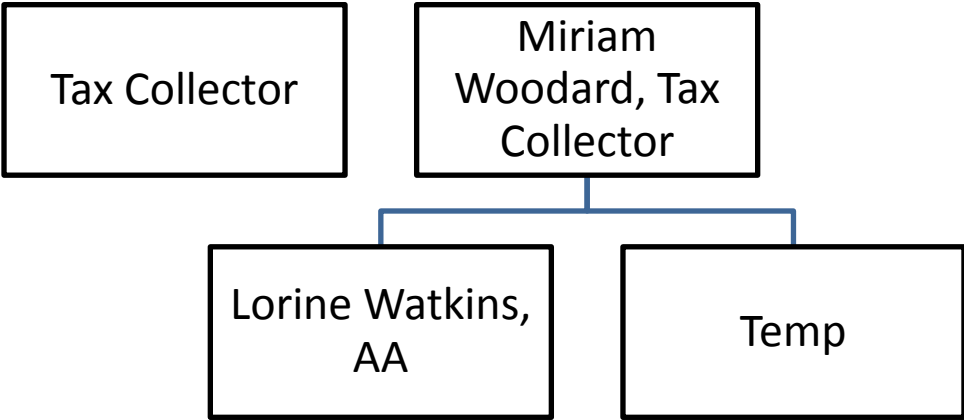
Sheila Pickett,
Dir.

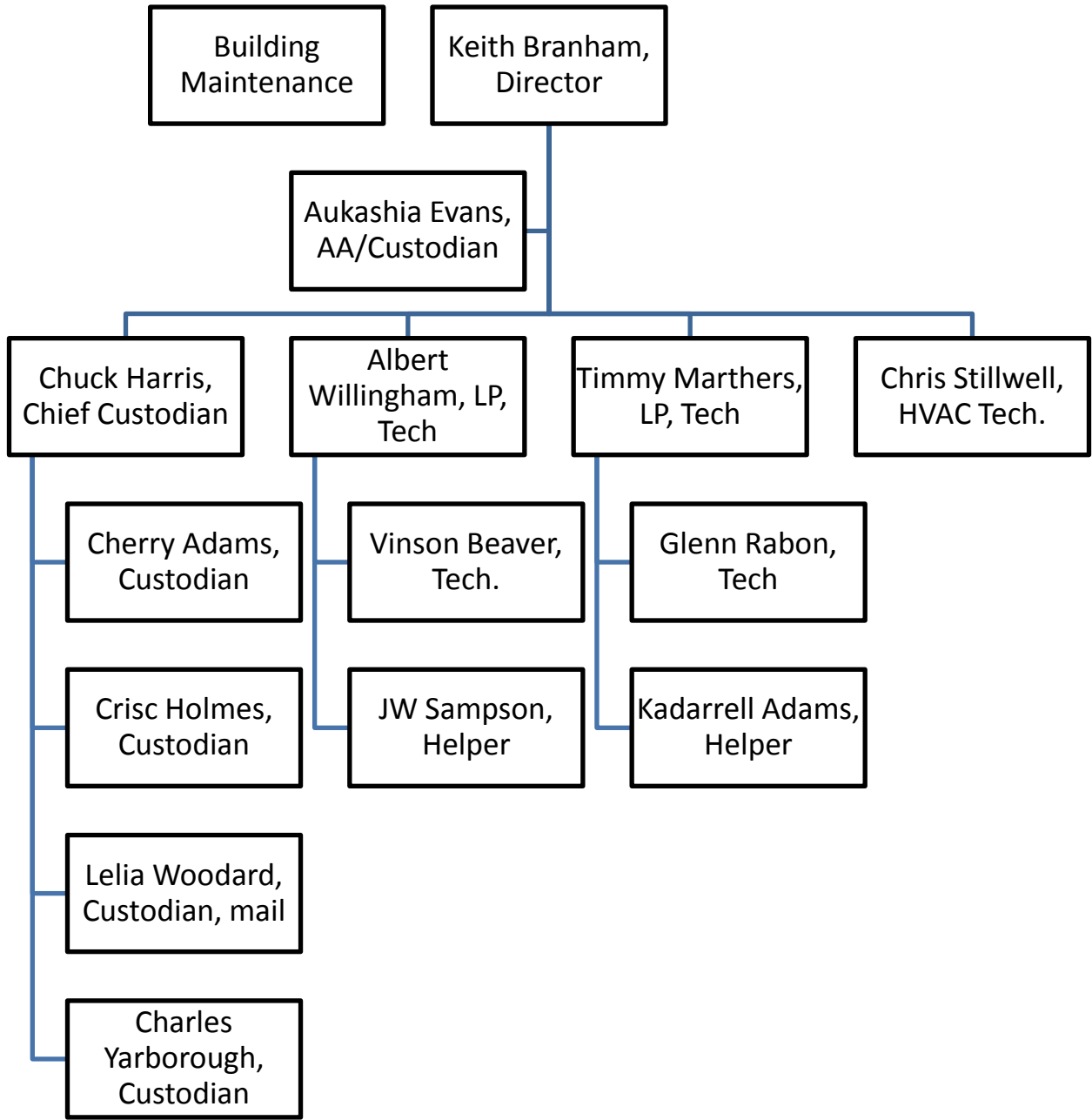
Brian Boulware,
Deputy

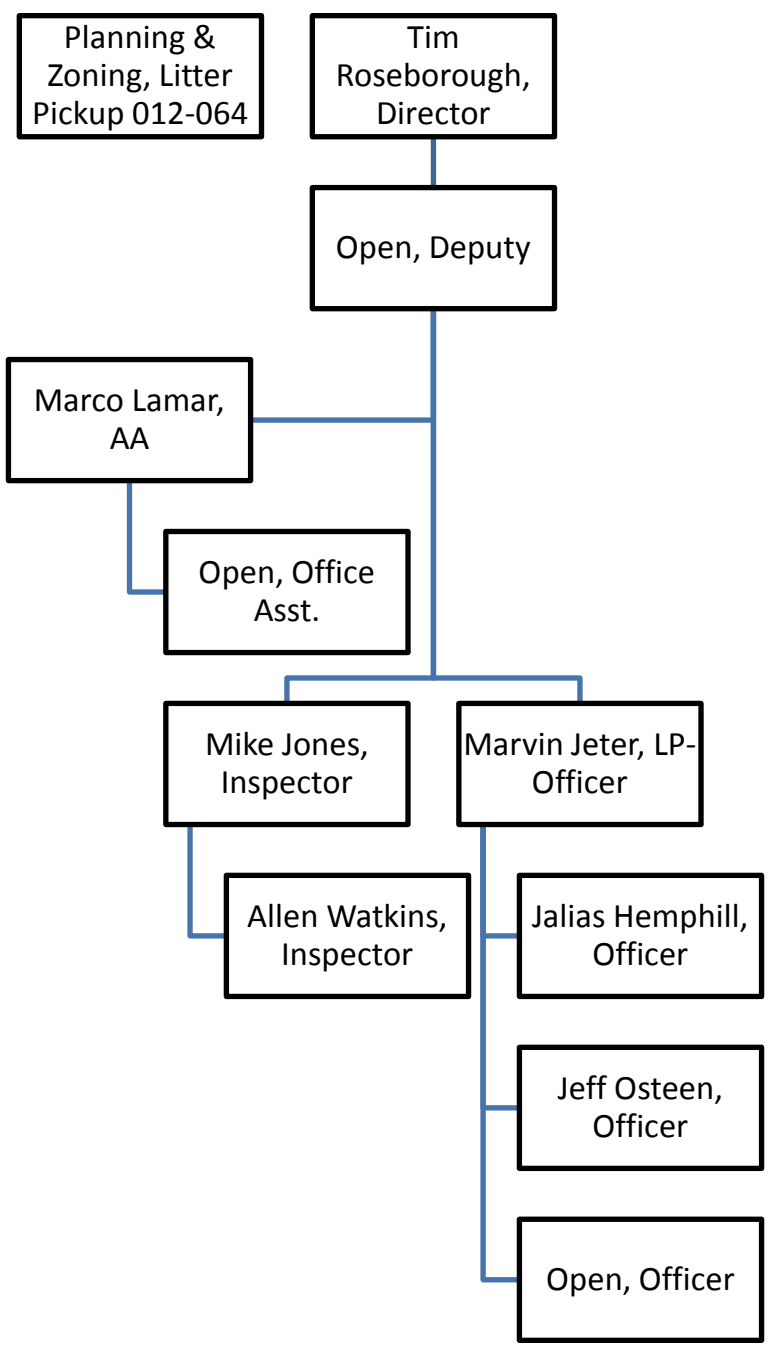












Litter
Pickup

4 Temps

Vehicle
Maintenance

013

Ricky Mozie, Director

Jeremy Harrison, Parts Room
Clerk

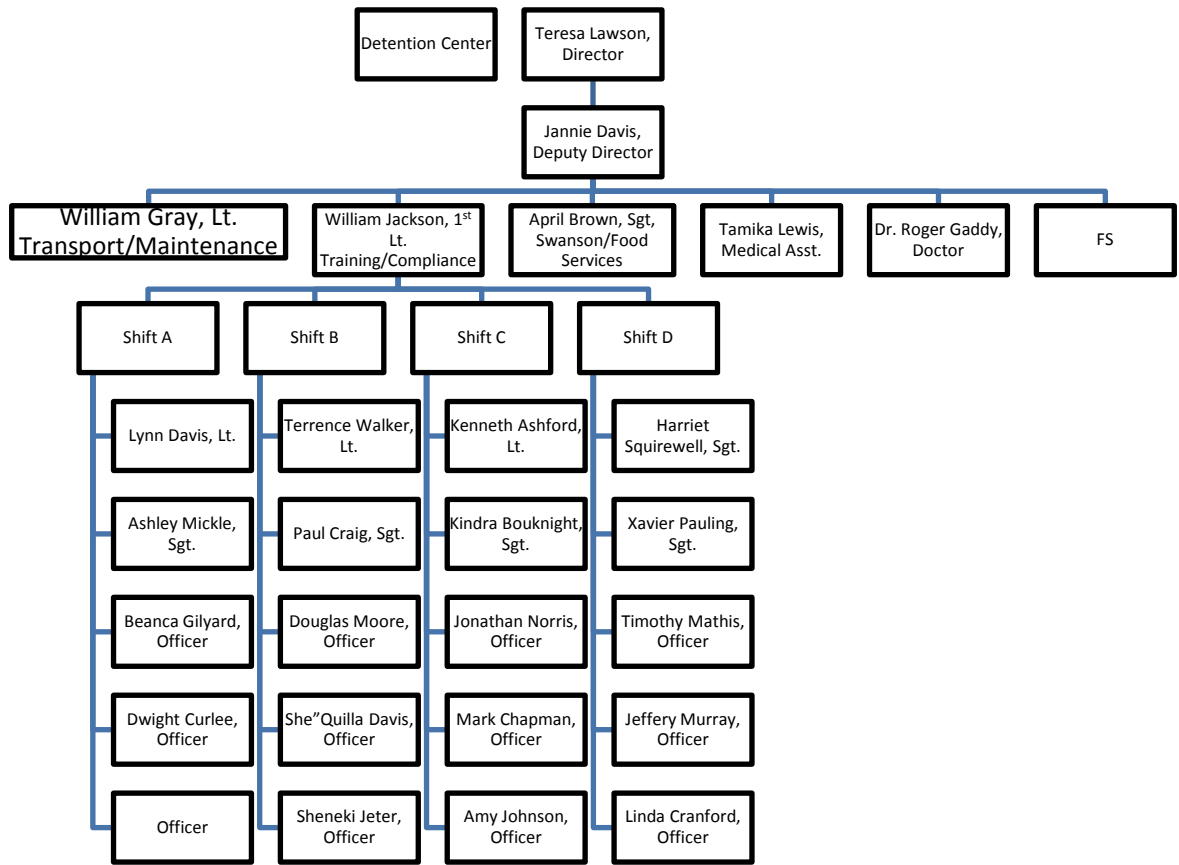
Fay Grier, Car Washer, Temp

Norwood McClain, Parts
Runner, Temp

Stephan Willingham,
Mechanic

Economic Development

Tiffany Harrison, Director



Public Work
Recycling
Scale house./
Transport

Billy Lucas
Director

Beth Ann
AA

Jason Gaston
Deputy Director,
Recycling
Manager

John Robertson
HEC

Camell Robinson
Supervisor

Dean Lee
HEO-LP

Willie Turner
LP-Driver

Mike Brewster
HEO

Calvin Walker
Truck Driver

James Brown
HEO

Gregory Wilson
Truck Driver

Larry Brown
HEO

Open
Truck Driver

Robert Smith
HEO

Willie Charles
Maintenance
Worker

Open
HEO

Richard Robertson
Maintenance
worker

Jimmy Dove
Truck Driver

5 temps

Joe Bartell
Truck Driver

Open
Truck Driver

James Jackson
Chipping Site
Operator

Willie Sanders
Maintenance
Worker

Dexter Johnson
Chipping Site
Operator

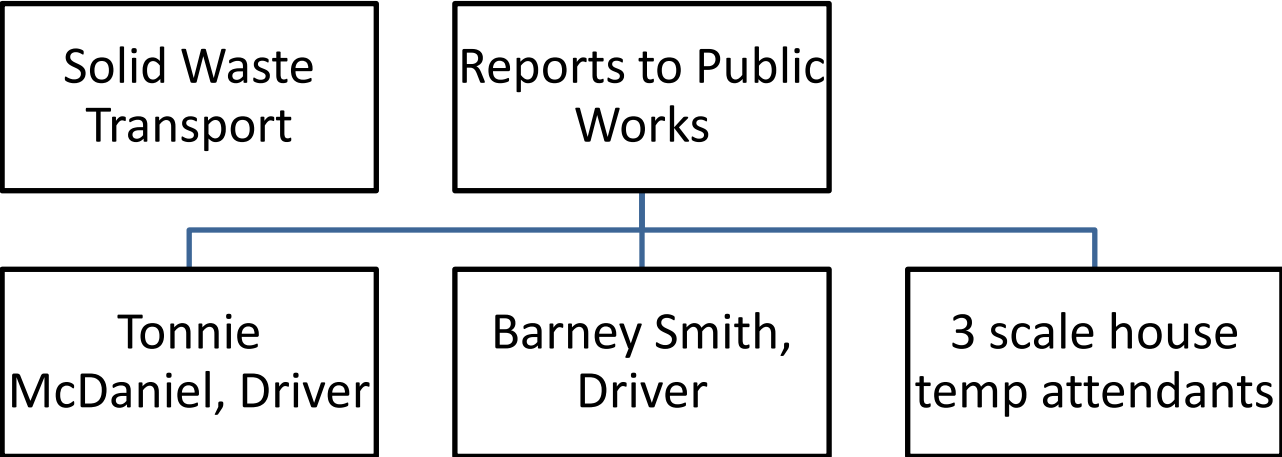
Caleb Robinson
Limp truck Operator

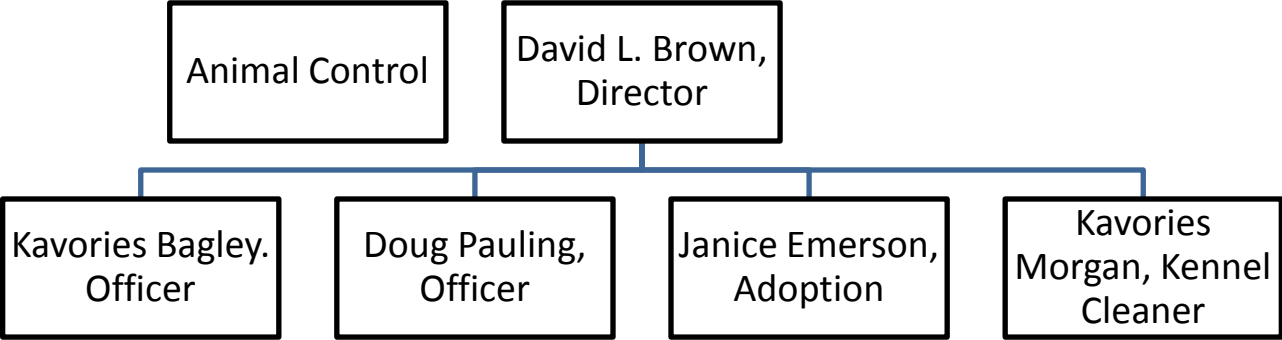
Ernest Chambers
Maintenance
Worker

10 recycling sites
46 temps

Donald Riepe
Maintenance
Worker

Scale House/
Transport
Attendants



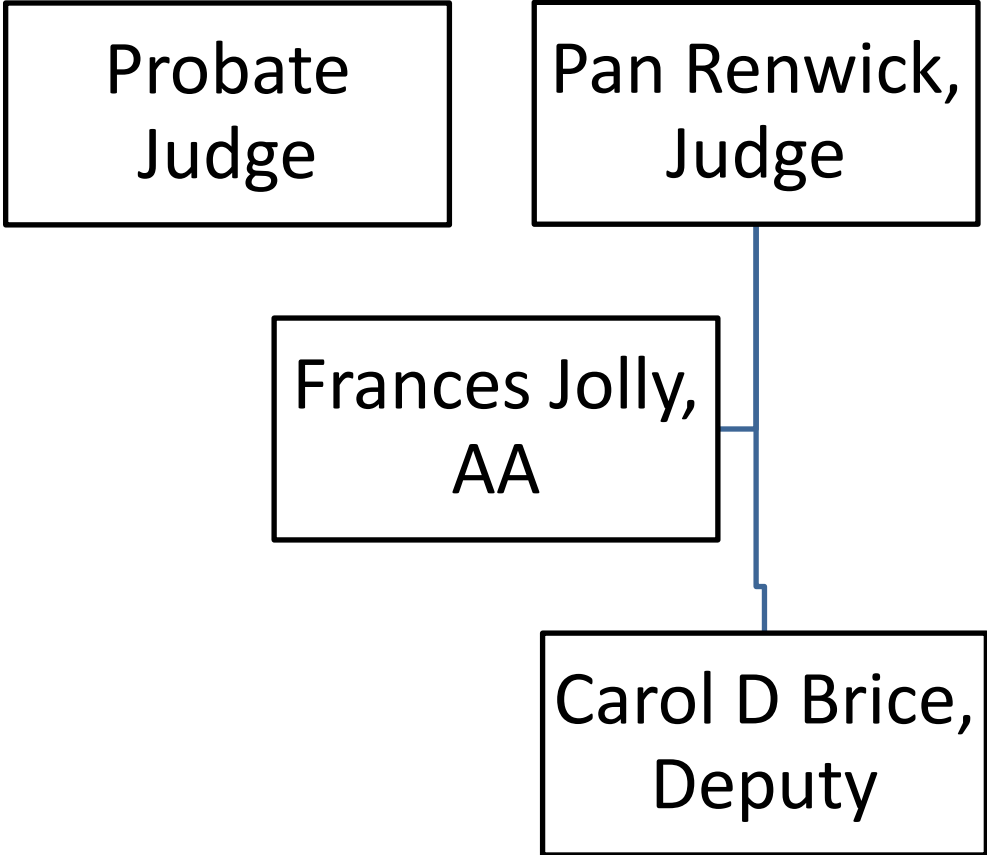


Probate
Judge

Pan Renwick,
Judge

Frances Jolly,
AA

Carol D Brice,
Deputy



Tax Auditor

Peggy Hensley,
Auditor

Wanda
Chappell,

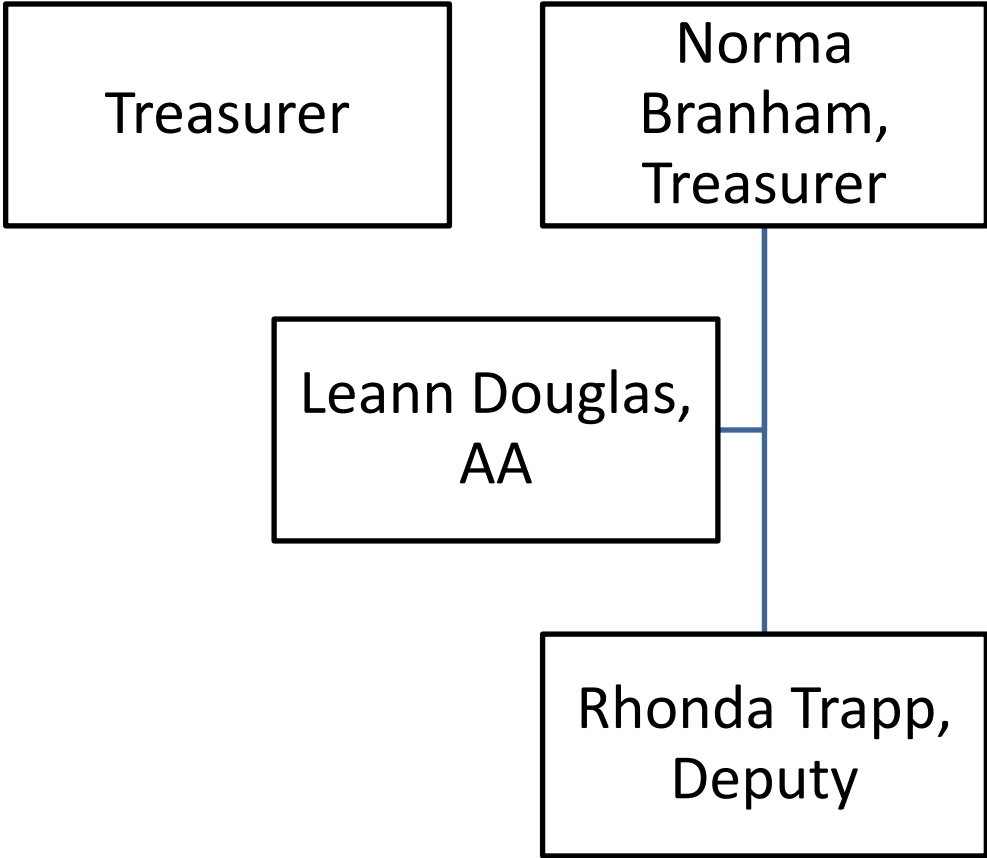


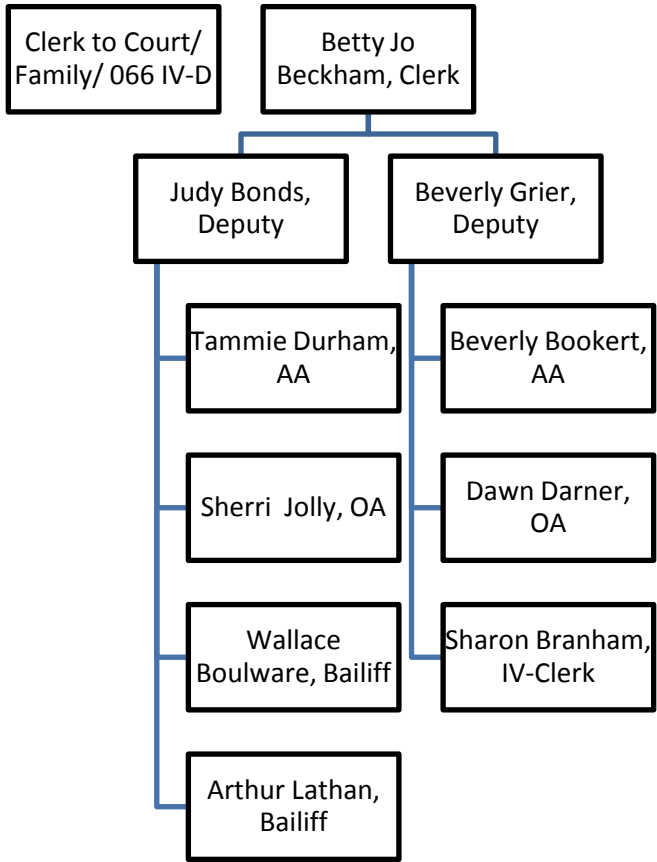
Treasurer

Norma
Branham,
Treasurer

Leann Douglas,
AA

Rhonda Trapp,
Deputy



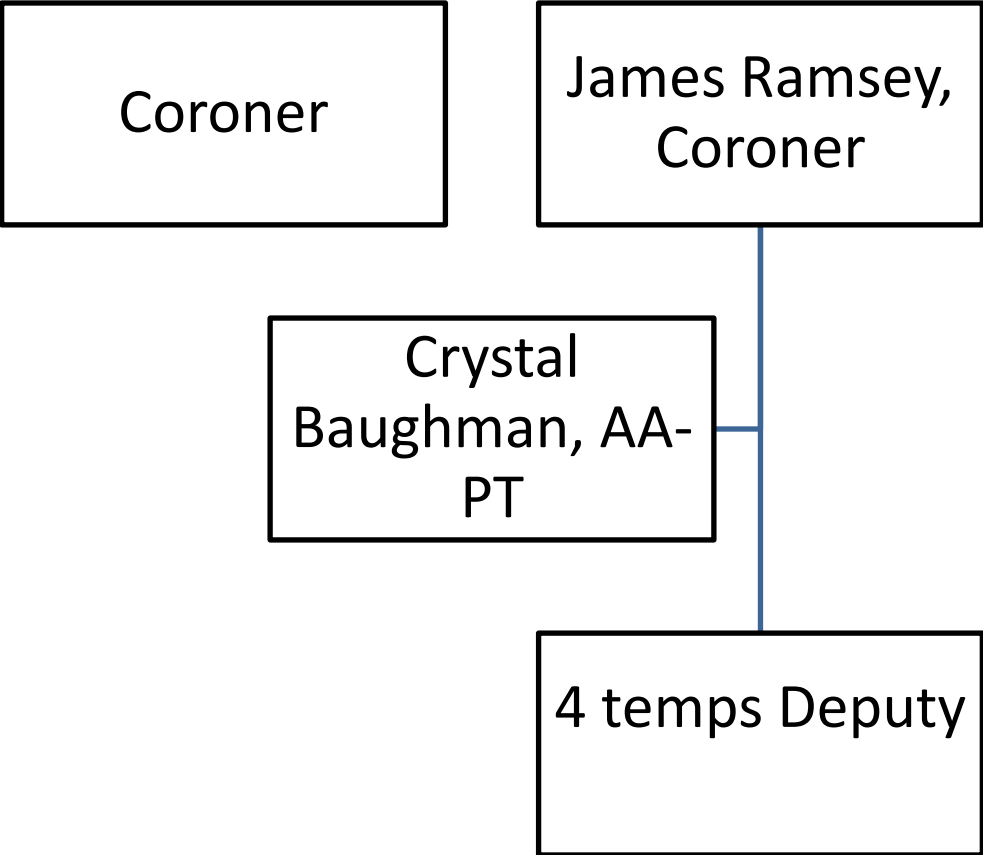


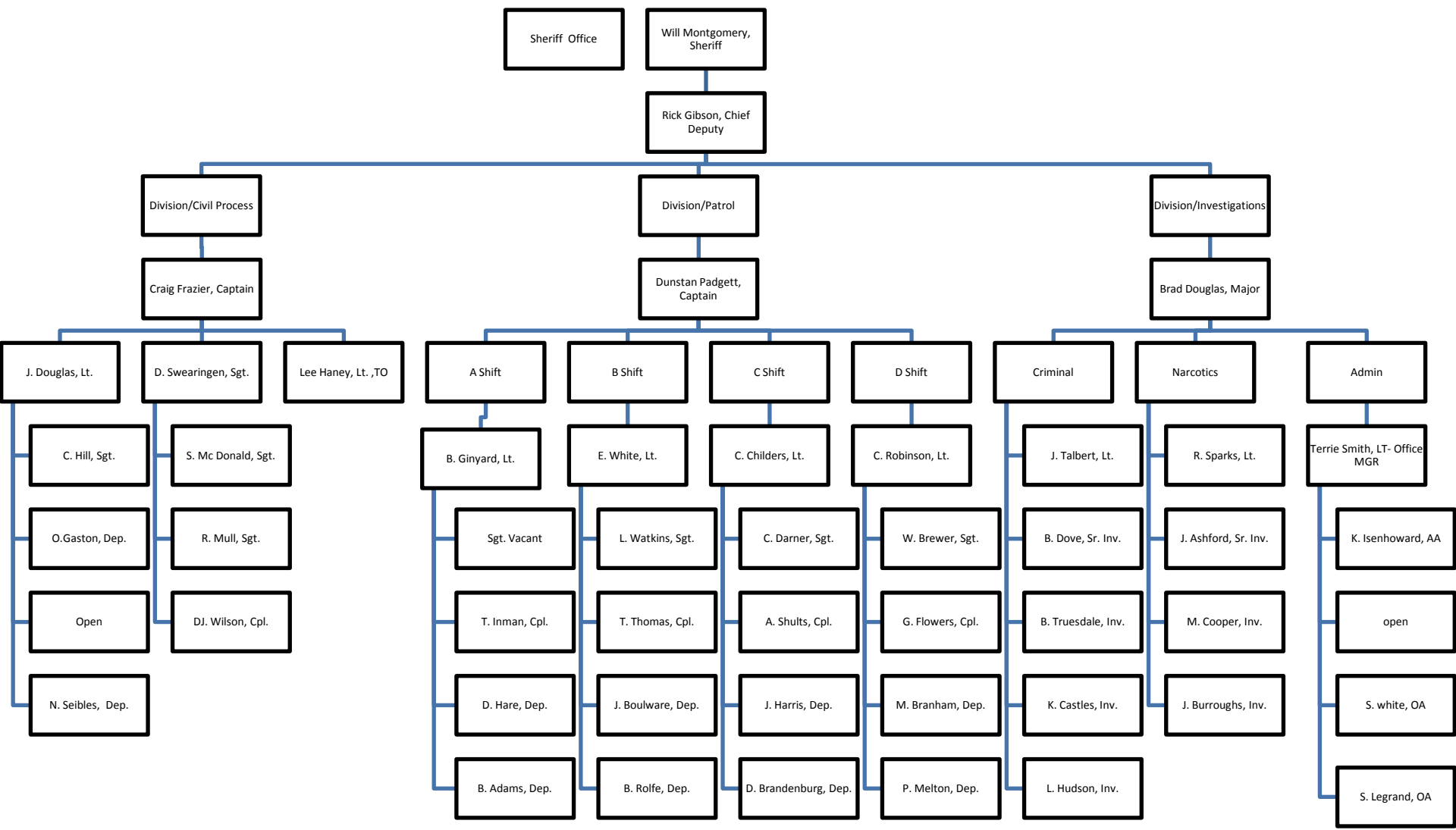
Coroner

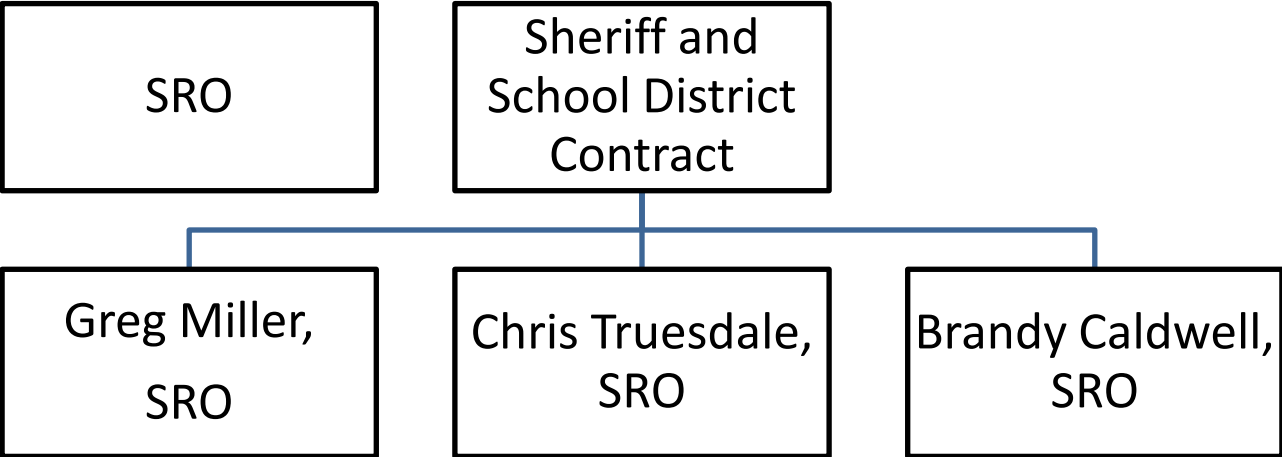
James Ramsey,
Coroner

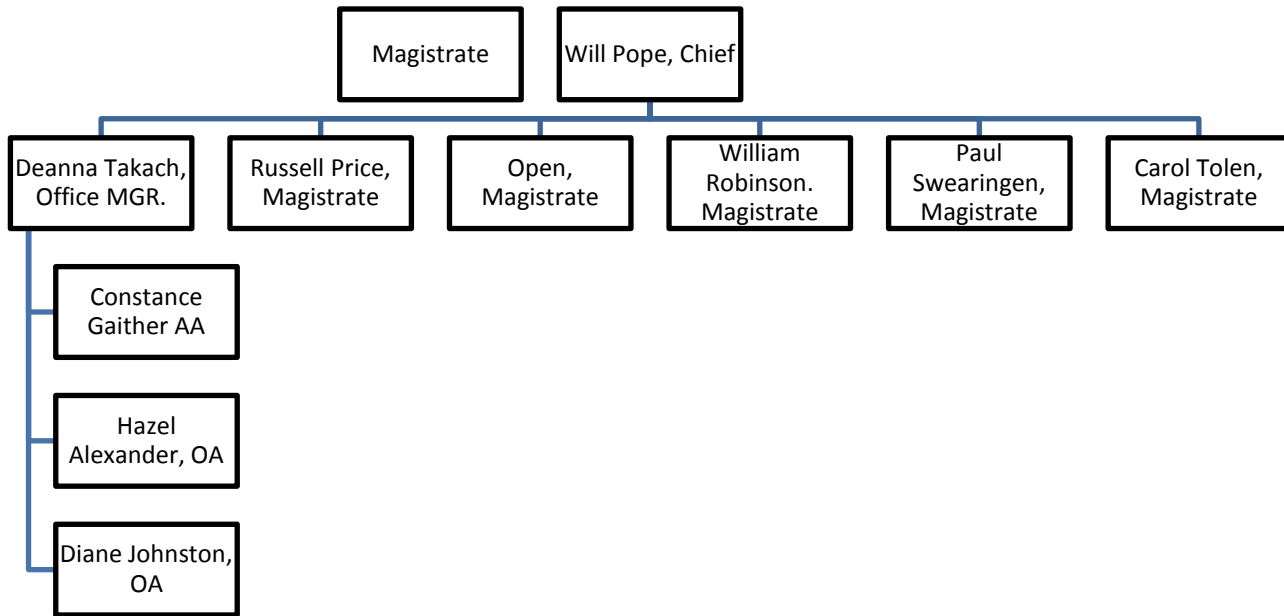
Crystal
Baughman, AA-
PT

4 temps Deputy









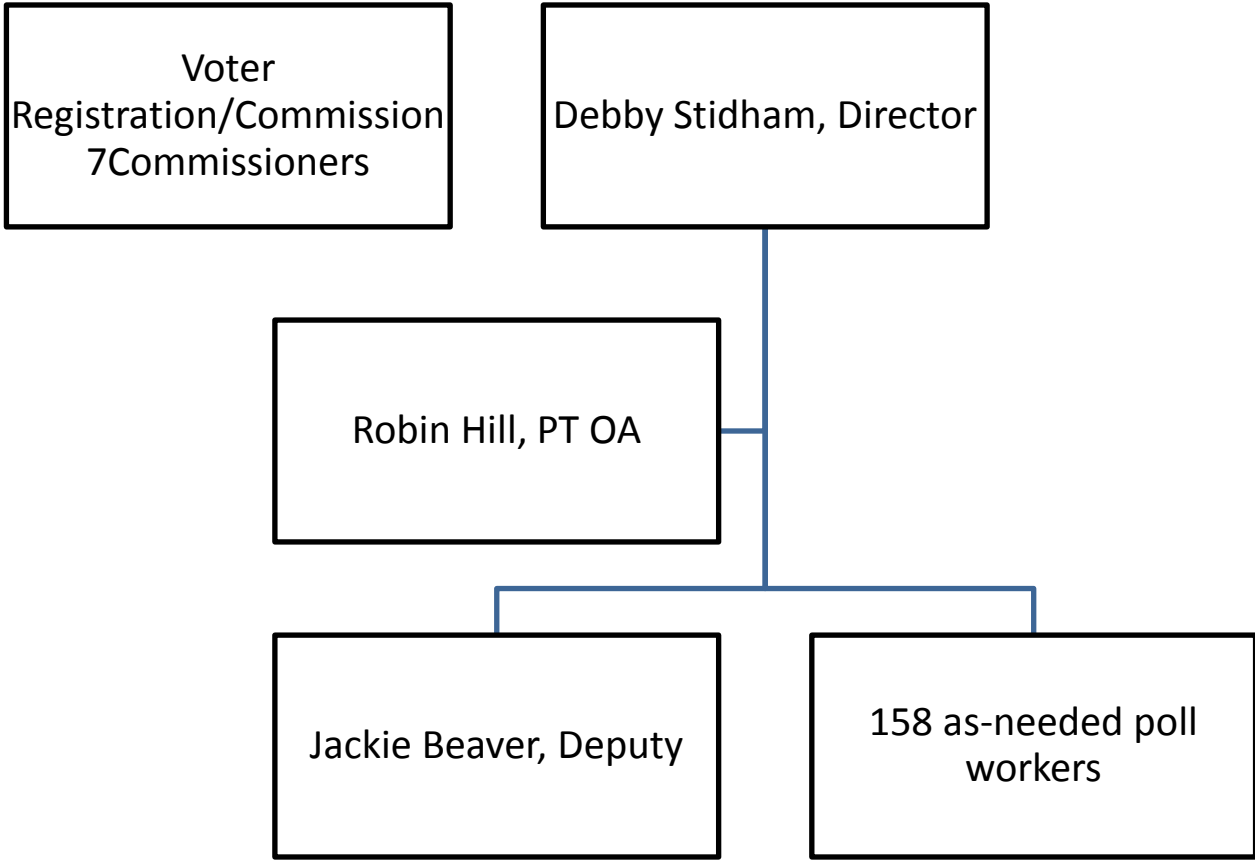
Voter
Registration/Commission
7Commissioners

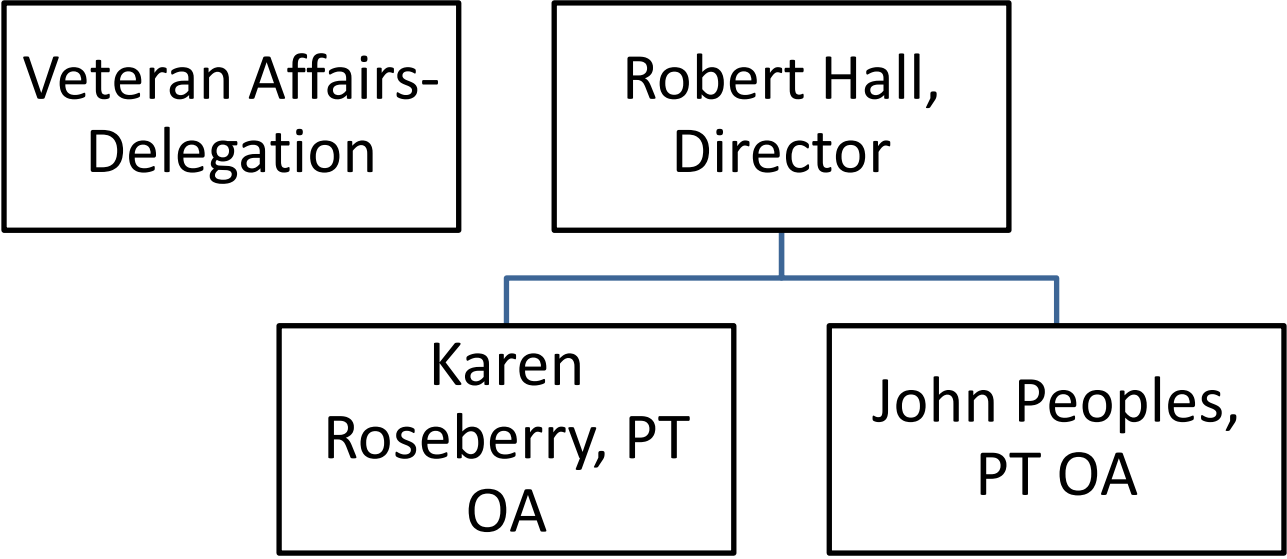
Debby Stidham, Director

Robin Hill, PT OA

Jackie Beaver, Deputy

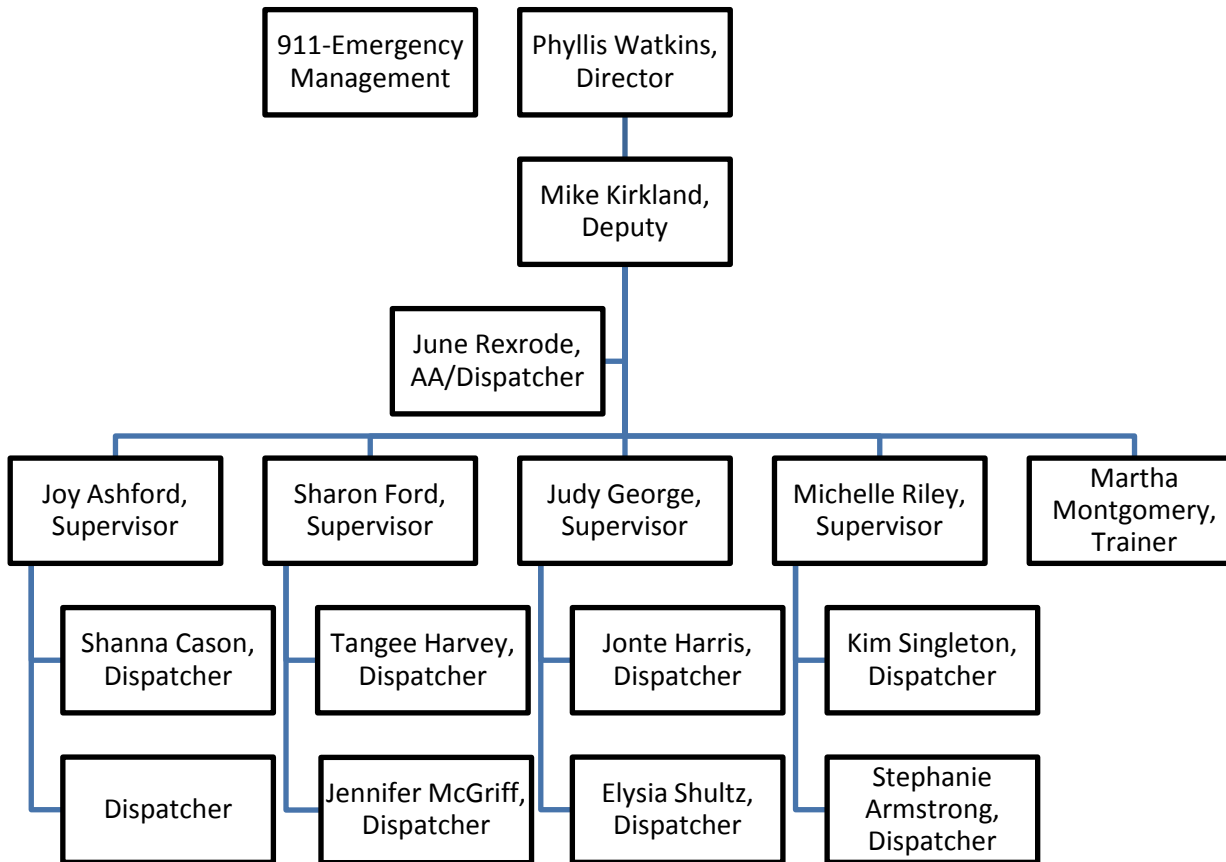
158 as-needed poll
workers





Delegation

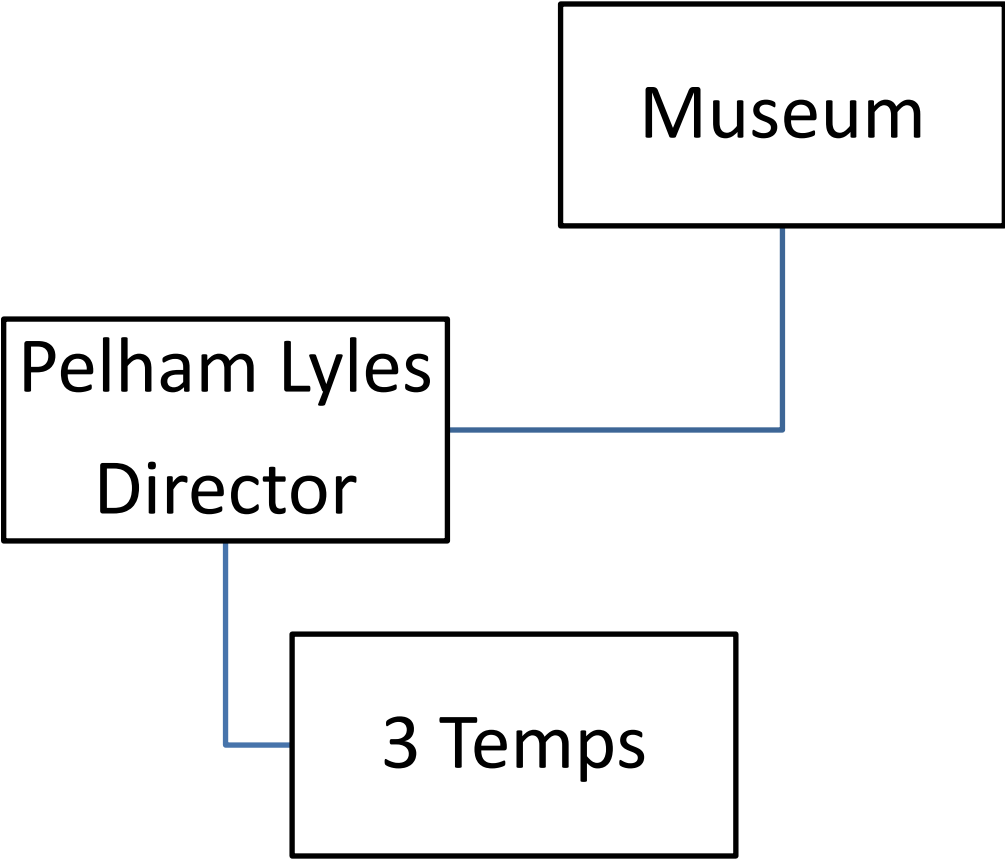
Karla Cooper,
Appointed

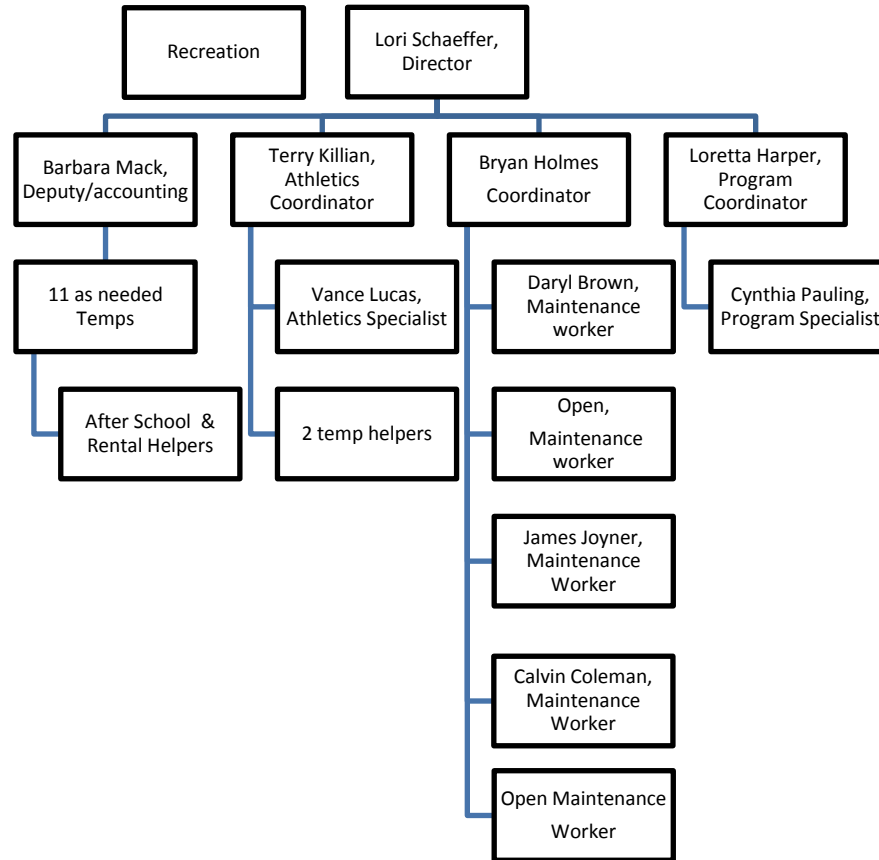


Soil &
Water

Patricia
Ingle







WIA

Tonya Jones,
Director

Melinda
Brown, AA



```
graph TD; WIA[WIA]; Tonya[Tonya Jones, Director]; Melinda[Melinda Brown, AA]; Tonya --- Melinda;
```

Transit 056,056-004,056-005

Roy Tucker, Director

Liz Bankhead, Program Manager

Liz Murphy, Operation Mgr.

Tempest Pearson, Asst. Operations Mgr.

Nikki Craig, Driver

Ronald Rhodes, Driver

Chantae Suber, Driver

Brian Huggins, Driver

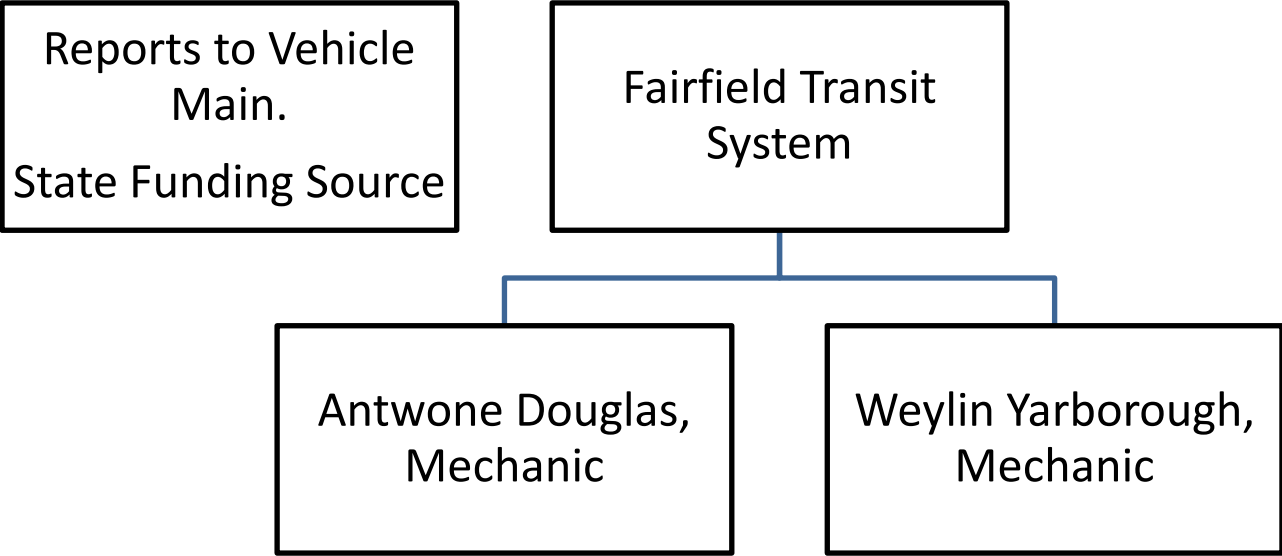
Theresa Thompson, Driver

Clarence Padgett, Driver

David Williams, Driver

Diane Cole, Driver

5 Temps as-needed Drivers



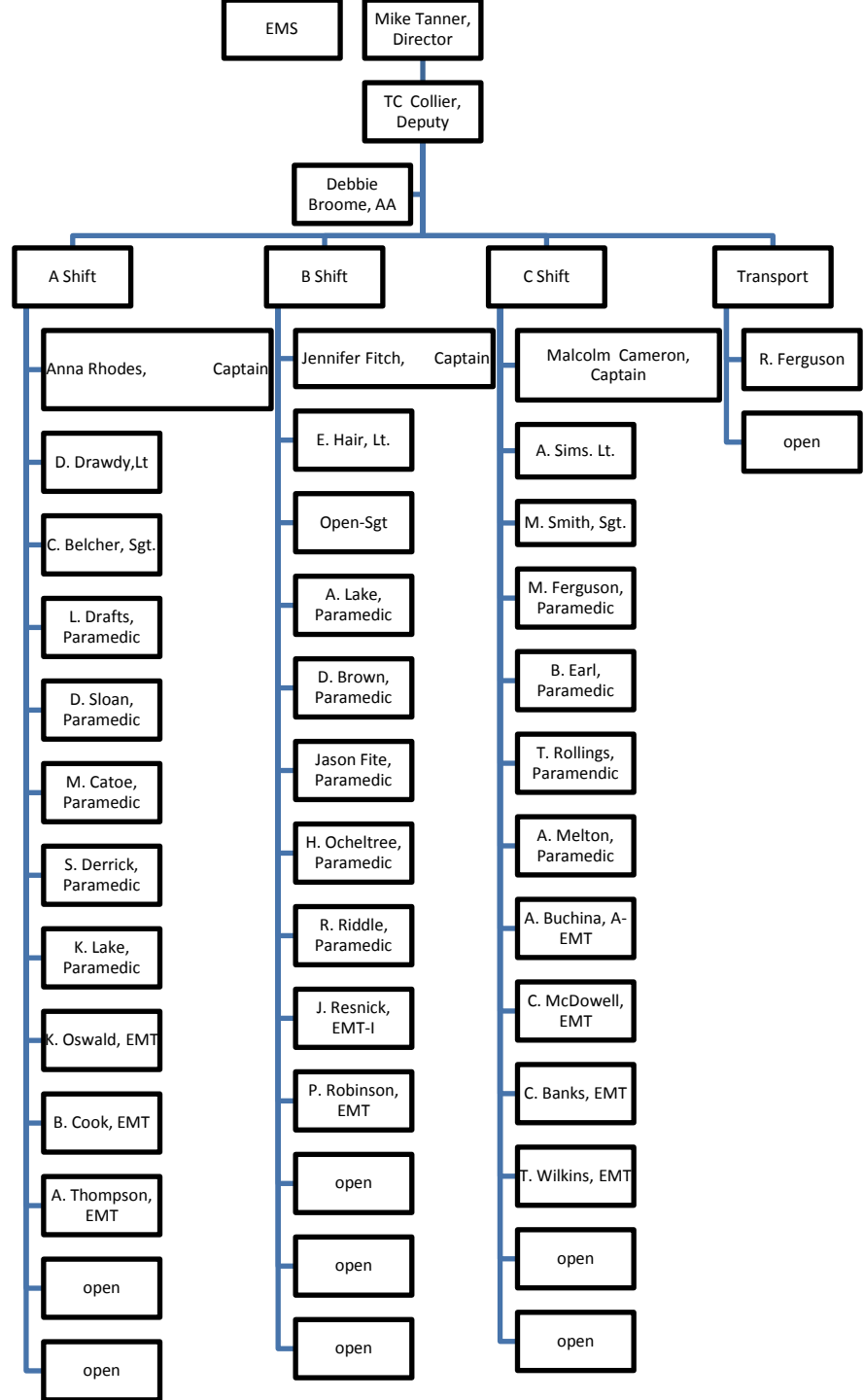
Clerk to Court
IV-D Family
Court

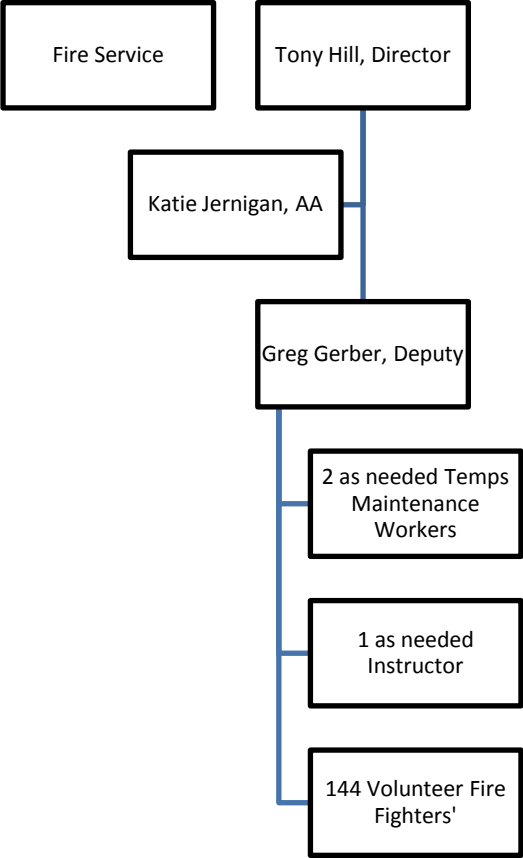
Sharon Branham



Victim Assistance
works with
Sheriff Office

Shirley Ashford,
Victims Advocate





Workforce
Liaison

Jackie Workman,
Liaison

Sheriff's Child
Support Clerk IV

OPEN

